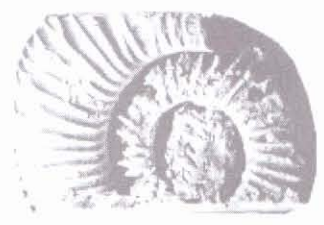





**FIRST UPPER JURASSIC AND LOWER  
CRETACEOUS (BERRIASIAN) AMMONITES  
FROM THE SEMBAR FORMATION  
(Belemnite shales), WINDAR NAI  
LASBELA - BALOCHISTAN, PAKISTAN**

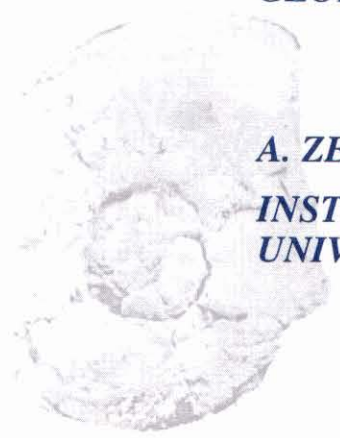


**A. N. FATMI**

**GEOLOGICAL SURVEY OF PAKISTAN**

**A. ZEISS**

**INSTITUT FÜR PALAONTOLOGIE  
UNIVERSITÄT ERLANGEN - NÜRNBERG**



**GEOLOGICAL SURVEY OF PAKISTAN  
GOVERNMENT OF PAKISTAN**

MEMOIR Vol. 19

**FIRST UPPER JURASSIC AND LOWER  
CRETACEOUS (BERRIASIAN) AMMONITES  
FROM THE SEMBAR FORMATION  
(Belemnite shales), WINDAR NAI,  
LASBELA - BALOCHISTAN, PAKISTAN**

**A.N. FATMI  
GEOLOGICAL SURVEY OF PAKISTAN**

**A. ZEISS  
INSTITUT FÜR PALAONTOLOGIE  
UNIVERSITÄT ERLANGEN - NÜRNBERG**

*Pp.1-114; 57 Plates; 8 Figures; 8 Tables*

**JOOZER MARZBAN**  
*Editor  
Geological Survey of Pakistan*

**PETER F. RAWSON**  
*Technical Editor  
University College London*

Quetta/Karachi - April, 1999

**FIRST UPPER JURASSIC AND LOWER CRETACEOUS  
(BERRIASIAN) AMMONITES FROM THE SEMBAR FORMATION  
(Belemnite shales), WINDAR NAI,  
LASBELA - BALOCHISTAN, PAKISTAN**

**CONTENTS**

	Page
ABSTRACT .....	5
INTRODUCTION .....	5
LOCATION AND ACCESSIBILITY .....	6
NATURE OF PRESERVATION AND METHODS .....	9
ACKNOWLEDGEMENTS .....	9
PREVIOUS WORK .....	10
STRATIGRAPHIC SUMMARY .....	11
FAUNAL ANALYSIS .....	13
SYSTEMATIC DESCRIPTIONS .....	32
Class Cephalopoda	
Subclass Nautiloidea Agassiz, 1847	
Superfamily Nautilaceae De Blainville, 1825	
Family Paracenoceratidae Spath, 1927	
<i>Paracenoceras cf. hexagonoides</i> Spath .....	32
<i>Paracenoceras sp. A</i> .....	33
Subclass Ammonoidea	
Family Phylloceratidae Zittel, 1884	
<i>Phylloceras cf. P. isoptypum</i> (Benecke) .....	33
<i>Phylloceras consanguineum</i> Gemmellaro .....	34
<i>Phylloceras hindermeyeri</i> Collignon .....	34
<i>Phylloceras aff. P. kudernatschi</i> (Hauer) .....	34
<i>Phylloceras cf. P. serum</i> (Oppel) .....	35
<i>Calliphylloceras malakialinense</i> Collignon .....	35
<i>Holcophylloceras polyolcum</i> (Benecke) .....	35
<i>Holcophylloceras mediterraneum</i> (Neumayr) .....	36
<i>Holcophylloceras cf. H. pseudosilesiacum</i> (Collignon) .....	36
<i>Ptychophylloceras ptychoicum</i> (Quenstedt) .....	37
<i>Ptychophylloceras ptychoicum tithonicum</i> Spath .....	37
Family Lytoceratidae Neumayr, 1875	
<i>Lytoceras aff. L. polyandramenum</i> Gemmellaro .....	38
<i>Lytoceras sp. indet.</i> .....	38
<i>Pterolytoceras aff. P. exoticum</i> (Oppel) .....	38
Family Haploceratidae Zittel, 1884	
Subfamily Haploceratinae Zittel, 1884	
<i>Haploceras cf. H. elimatum</i> (Oppel) .....	39
Subfamily Glochiceratinae Hyatt, 1900 (Callomon, 1981)	
<i>Glochiceras mengali sp. nov.</i> .....	39
Family Oppelidae Bonarelli, 1894	
Subfamily Taramelliceratinae Spath, 1928.	
<i>Taramelliceras (Hemihaploceras) pugile</i> (Neumayr) .....	40
<i>Taramelliceras (T.) Jamuti sp. nov.</i> .....	40
<i>Taramelliceras (T.) Vredenburgi sp. nov.</i> .....	41
<i>Taramelliceras T. cf. (T.) gibbosum</i> Spath .....	42





























































































































































































































































































































































































































































































































